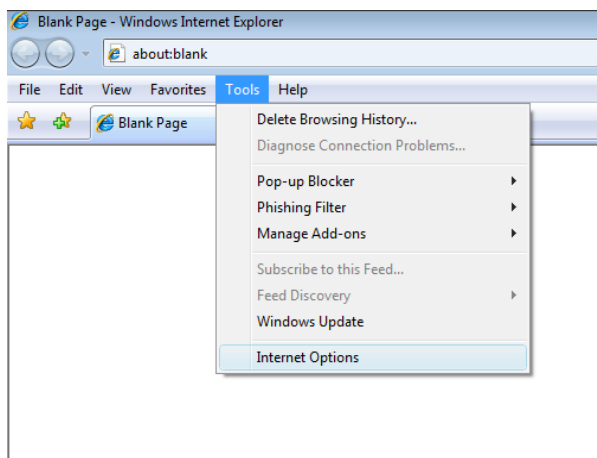


NVR advisory - ensuring your Browser is set to the correct “British” language/culture

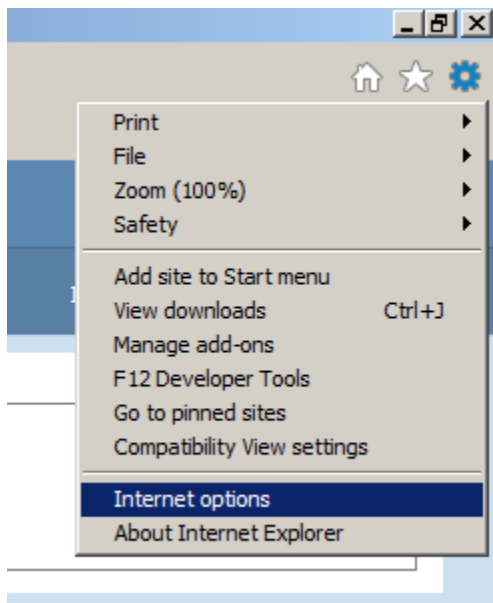
Internet Explorer (all versions)

Bring up the Internet Options dialog window. This is accessible in various ways depending upon the version of IE.

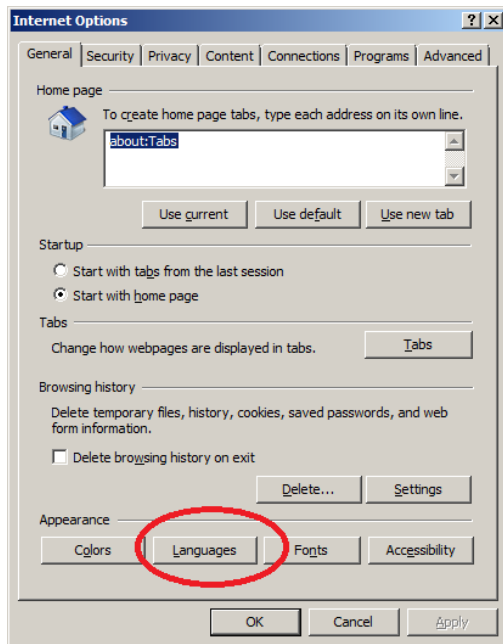
For example, this is IE7 (select the “Internet Options” option from the Tools Menu):



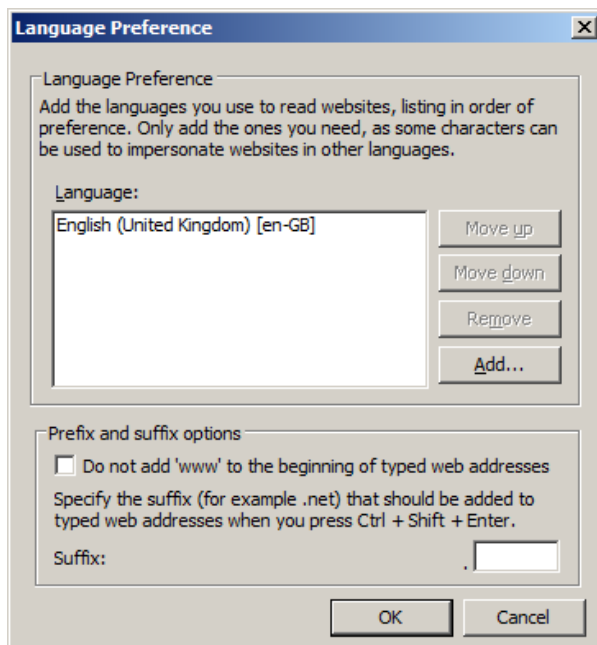
This is IE11 (click on the ‘flower’ icon, select Internet options):



In the Internet Options dialog on the first tab (General), select the Languages button.

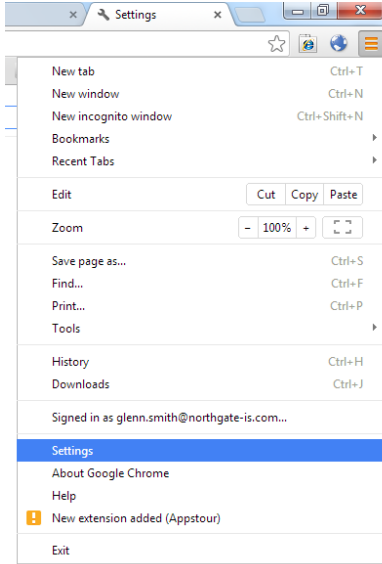


In the subsequent window that appears (Language Preferences), ensure “English (United Kingdom) [en-GB]” is the first (or only) item in the list. If not, add this language and remove/resort so that it is so.



Chrome

In Chrome, select the menu icon (three horizontal bars) and select 'settings'.



In the browser page that appears, select "Show Advanced Settings"

A screenshot of the Chrome Settings page. The page is titled 'Settings' and shows various configuration options. The 'Show advanced settings' link at the bottom is circled in red. The page is divided into sections: 'Sign in', 'On start-up', 'Appearance', 'Search', 'Users', and 'Default browser'. The 'Show advanced settings' link is located at the bottom of the page, below the 'Default browser' section.

Chrome Settings

History

Extensions

Settings

Help

Sign in

Signed in as glenn.smith@northgate-is.com. Sync has been stopped via the Go

Disconnect your Google Account... Advanced sync settings...

On start-up

Open the New Tab page

Continue where I left off

Open a specific page or set of pages. [Set pages](#)

Appearance

Get themes Reset to default theme

Show Home button [✖](#)

<https://mail.google.com> [Change](#)

Always show the bookmarks bar [✖](#)

Search

Set which search engine is used when searching from the [omnibox](#).

Google Manage search engines...

Users

You are currently the only Google Chrome user.

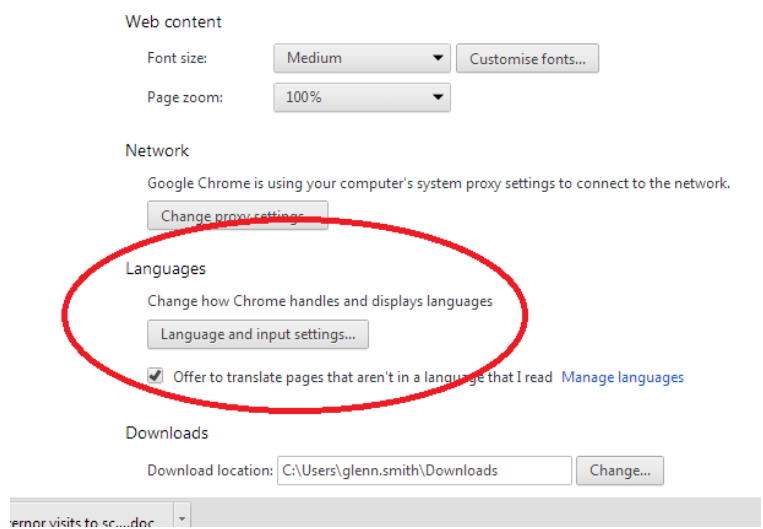
Add new user... Delete this user Import bookmarks and settings...

Default browser

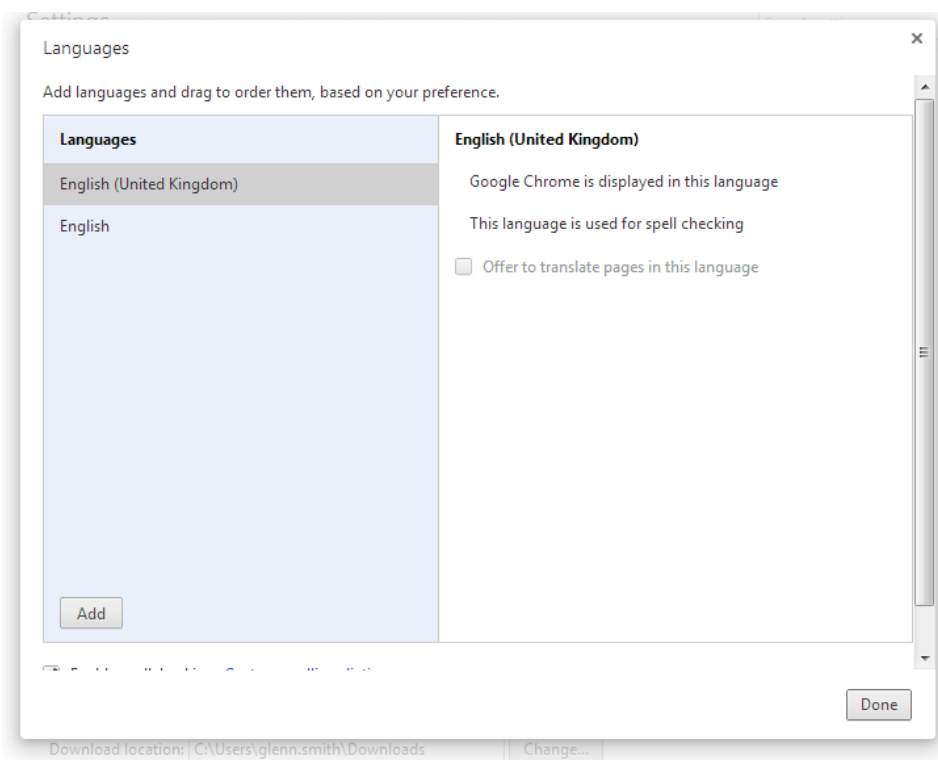
The default browser is currently Google Chrome.

[+ Show advanced settings](#)

The page will expand downwards - scroll down until you see the Languages section and click the button “Languages and input settings....”



In the window that appears, ensure the English (United Kingdom) option is the first item in the list – if not, add this language and resort accordingly.



Firefox

Firefox needs to be downloaded and installed with the correct language version. To do this, navigate (using another browser, such as IE) to:

<http://www.mozilla.org/en-US/firefox/all/>

On this page scroll down to find the British download option and download for the appropriate platform – Windows is highlighted in the image below.

