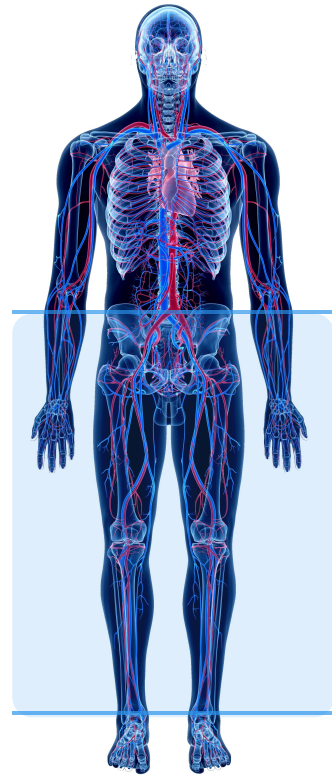
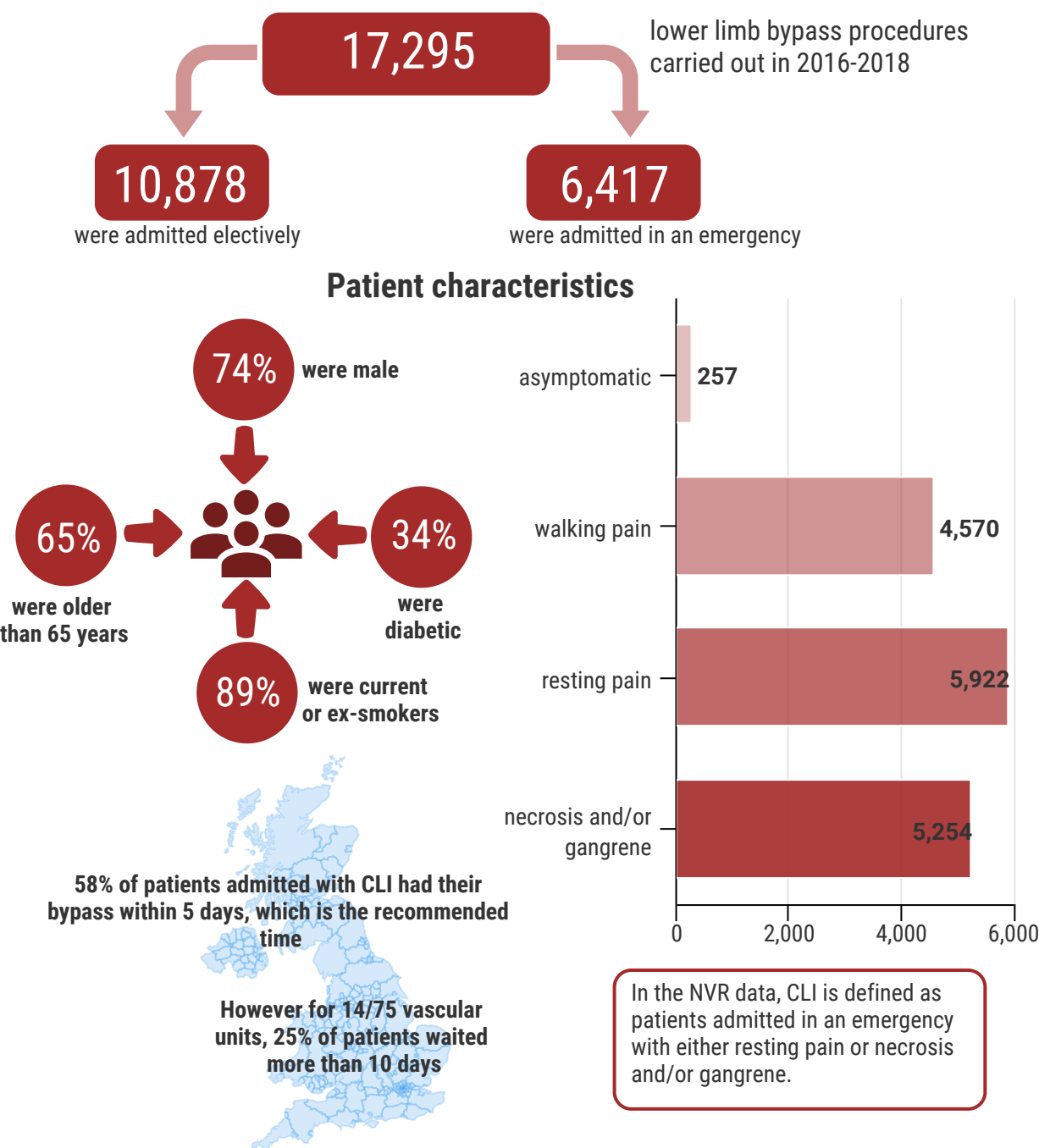


Lower limb bypass for peripheral arterial disease to prevent limb loss

Peripheral arterial disease (PAD) is a restriction of the blood flow in the lower limb arteries that can severely affect a patient's quality of life, and risk their limb.

Open surgical (bypass) interventions become options when conservative therapies have proved to be ineffective.



Glossary

The average is the median; "typically between" is the interquartile range.

Critical limb ischaemia (CLI) is the most severe form of PAD, where the blood flow to the legs becomes severely restricted.

Patient outcomes post bypass

